



and multidisciplinary research. The knowledge transfer will be enhanced by networking between research and industry.

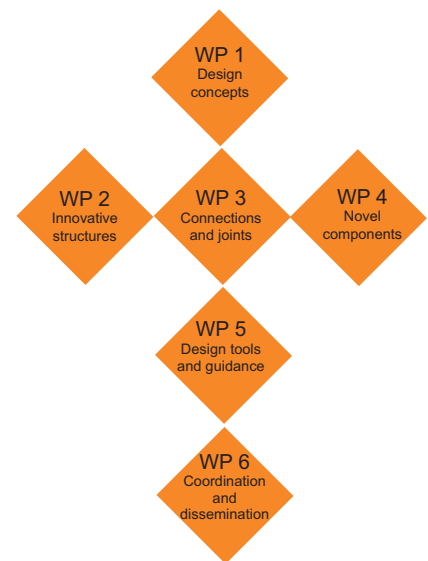
Industrial involvement

The FireInTimber project has emerged through a close cooperation with the BWW industry and national industries within the FSUW network (see next page). The BWW Road Map 2010 initiative provided guidance during a pre-study. This close cooperation will continue within the FireInTimber project. BWW representatives will be active in the project. National industries will be involved by each partner having direct contacts.

Work packages

Six work packages are included in the FireInTimber project

1. Design concepts for load-bearing timber structures under fire conditions
2. Innovative solid wood panel and light weight timber structures
3. Connections and joints
4. Novel components and structural materials
5. Design tools and guidance
6. Coordination and dissemination



FireInTimber is a new project within the European WoodWisdom-Net framework with 14 participants from 9 countries. The project is starting in November 2007 and will be finalised by the end of 2009. It is supported by industry through the European initiative BWW Building With Wood and public funding organisations.

Objectives

The key objective is to provide new possibilities for wood products in construction by proper fire design. The use of wood products is to be stimulated by scientifically robust data, presented in user-friendly tools for engineers and other stakeholders. The outcome will lead to simplified approval processes for wood products in buildings and increase the general public's confidence and positive perception of wood.

The vision is to ensure that the wider use of wood in buildings is associated with improved fire safety. The project will also build a knowledge base by promoting core competence

Expected results

The expected results from the FireInTimber project will be

- Analytical design concepts for load-bearing timber structures under fire conditions
- New models for load-bearing solid wood crosslaminated panel and light weight structures during fire exposure
- Performance principles of connections at fire exposure
- Guidance on joints between wall and ceiling elements and on fire stops within structures
- Critically reviewed novel innovative products and summary of new knowledge for product development
- The first European wide guideline on the fire safe use of wood in buildings.

FireInTimber partners

| Country | Partners | Contact | E-post |
|-------------------|---|--|--|
| Sweden | SP Träteck | Birgit Östman, coord. Jürgen König | birgit.ostman@sp.se juergen.konig@sp.se |
| Finland | VTT | Esko Mikkola | esko.mikkola@vtt.fi |
| Germany | TUM Technische Universität München DGfH | Stefan Winter Matthias Krolak | winter@bv.tum.de m.krolak@dgfh.de |
| France | BPU Blaise Pascal University CSTB | Abdelhamid Bouchair Dhionis Dhima | bouchair@cust.univ-bpclermont.fr dhionis.dhima@cstb.fr |
| Norway | TreSenteret, Wood Centre | Harald Landrø | harald.landro@tresenter.no |
| UK | BRE Building Research Establishment | Julie Bregulla | bregullaj@bre.co.uk |
| Austria | HFA Holzforschung Austria UIBK Innsbruck University TUW Technische Universität Wien | Martin Teibinger Hans Hartl Karin Hofstetter | m.teibinger@holzforschung.at hans.hartl@uibk.ac.at karin.hofstetter@tuwien.ac.at |
| Switzerland | ETH Zurich | Andrea Frangi | frangi@ibk.baug.ethz.ch |
| Estonia | Resand | Alar Just | ajust@staff.ttu.ee |
| European industry | CEI-Bois / BWW Building With Wood | Filip De Jaeger/ Dieter Lechner | filip.de.jaeger@cei-bois.net/ office@austrokantel.at |

BWW industry representatives

Jan Lagerström, Swedish Forest Industries Federation,
Chairman, jan.lagerstrom@skogsindustrierna.org

Georg Hochreiner, Wiehag, Austria,
g.hochreiner@wiehag.com

Jouni Hakkarainen, Finnforest,
jouni.hakkarainen@finnforest.com

Pekka Nurro, Finnish Forest Industries Federation,
pekka.nurro@forestindustries.fi

Further industries are participating on the national levels.

Supporting public funding organisations

FFG (AT), Bundesministerium für Bildung und Forschung (DE), Forestry Commission (UK), Norges forskningsråd, Ministère de l'Agriculture (FR), Tekes (FI) and Vinnova (SE).

European FSUW network

A European Network FSUW – Fire Safe Use of Wood was formed in 2002 upon an initiative from Finland and Sweden, as being countries with both a high production of wood products and having leading expertise in wood and fire research. Twelve European countries are participating with both industry representatives and researchers. National authorities via their Fire Experts are also being involved, since they play a key role in creating new building regulations. The aim is to include further European countries. Further information on the FSUW network may be found at www.fsuw.com.

The present obstacles to an increased and fire safe use of wood in buildings in Europe can be overcome only by transnational cooperation. The FSUW network offers an excellent platform for such a cooperation.



FireInTimber team at kick-off meeting in Stockholm 8 November 2007.



Birgit Östman, SP Träteck
coordinator, WP 5 and 6 leader



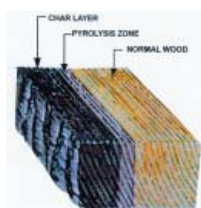
Esko Mikkola, VTT
WP 1 and 4 leader



Jürgen König, SP Träteck
WP 2 leader



Stefan Winter, TUM
WP 3 leader



building with wood
CEI-Bois Roadmap 2010

